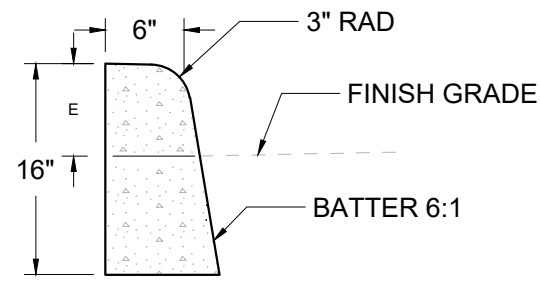
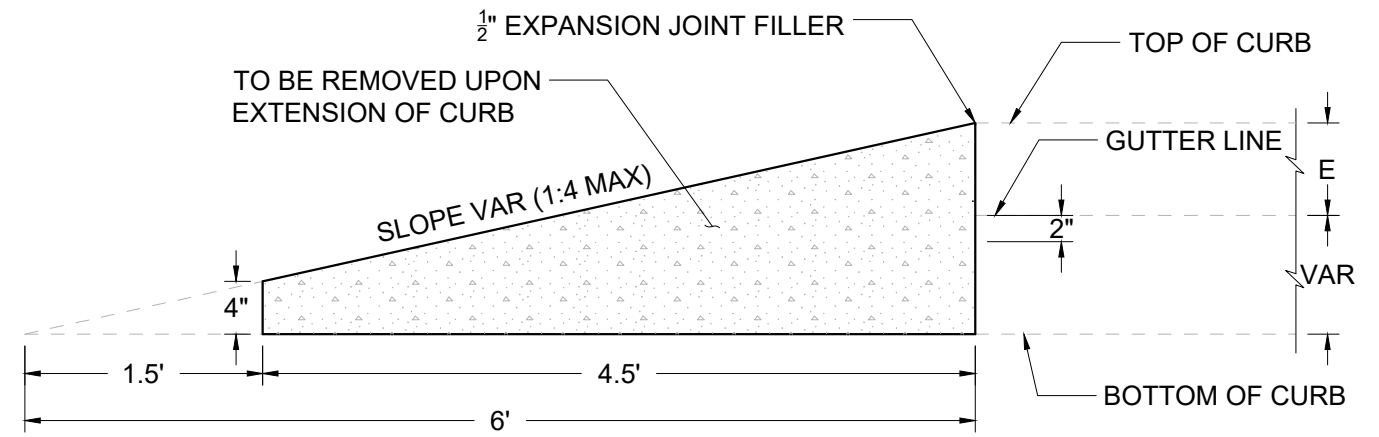


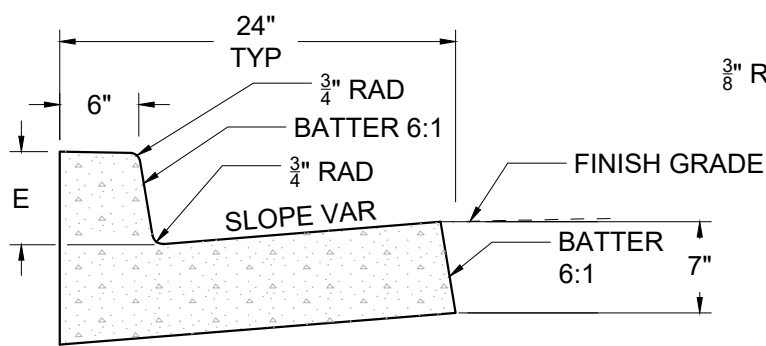
**STANDARD CURB**



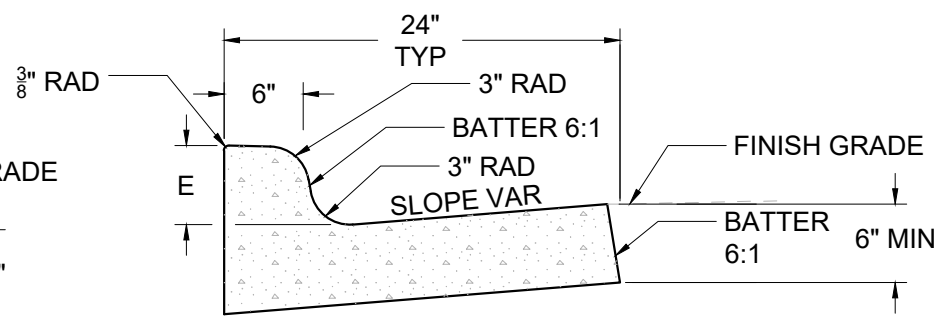
**MOUNTABLE CURB**



**CURB ENDING DETAIL**

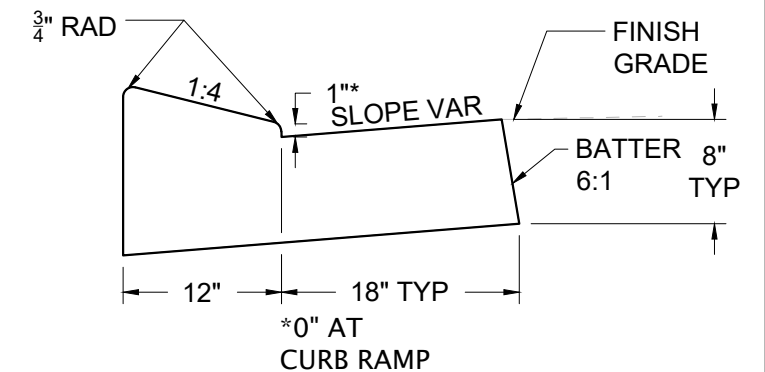


**CURB AND GUTTER**

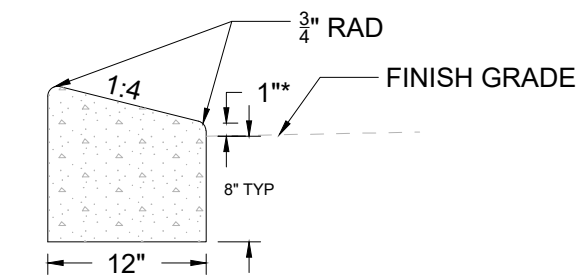


**MOUNTABLE CURB AND GUTTER**

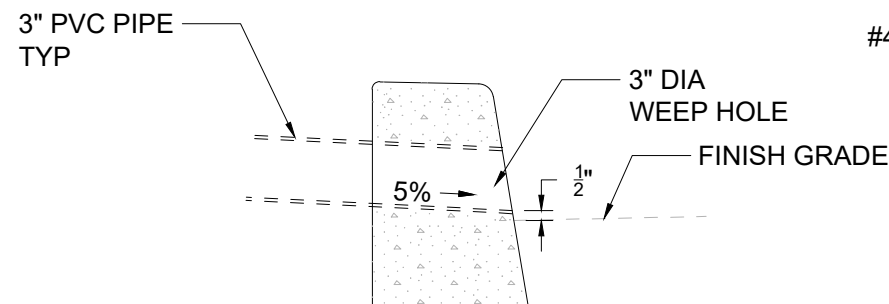
**GUTTER PAN NOTES:**  
 Slope 5.0% normal.  
 Slope 4.0% max. at curb ramps.  
 Vary slope as reqd. for drainage.  
 Vary where shown on plans, and allowed by jurisdiction.



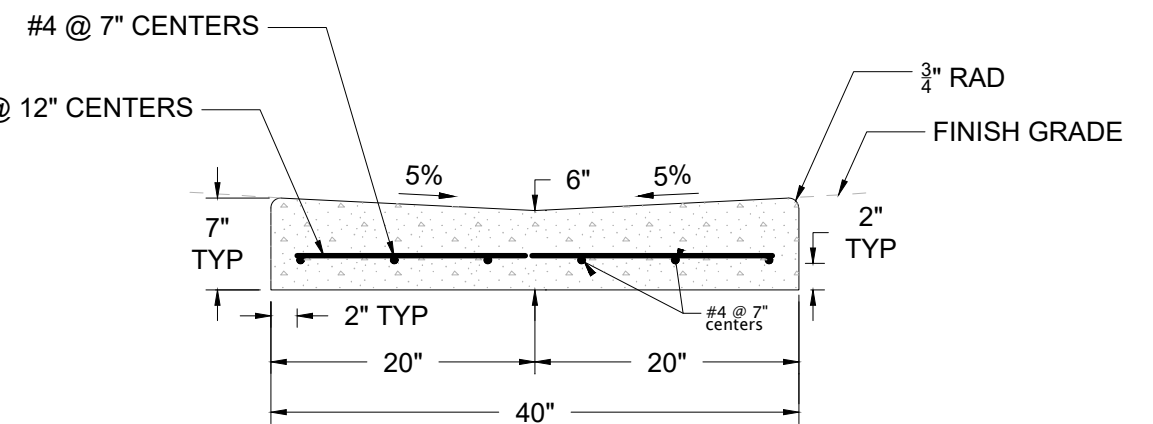
**LOW PROFILE MOUNTABLE CURB AND GUTTER**



**LOW PROFILE MOUNTABLE CURB**



**WEEP HOLE DETAIL**



**VALLEY GUTTER**

**NOTES:**

1. CURB EXPOSURE E = 6" TO 9" AS MEASURED VERTICALLY FROM FLOWLINE TO HIGHEST POINT ON CURB. VARY AS SHOWN ON PLANS OR AS DIRECTED.
2. CONSTRUCT EXPANSION JOINTS AT 200' MAX SPACING, AT POINTS OF TANGENCY, AND AT ENDS OF DRIVEWAYS.
3. CONSTRUCT CONTRACTION JOINTS AT 15' MAX SPACING AND AT ENDS OF EACH INLET AND CURB

4. RAMP.
4. TOPS OF ALL CURBS SHALL SLOPE TOWARDS ROADWAY AT 1.5% MAX (2% FINISHED SURFACE SLOPE) UNLESS OTHERWISE SHOWN OR DIRECTED.
5. ON OR ALONG STATE HIGHWAYS, CURB AND GUTTER IS REQUIRED AT CURB RAMP.

**NOTES:**

1. THIS DETAIL HAS BEEN MODIFIED BY THE CITY OF WINSTON. ALL MATERIAL AND WORKMANSHIP SHALL BE IN ACCORDANCE WITH THE CURRENT OREGON STANDARD SPECIFICATIONS.



**WINSTON STANDARD DRAWING**

**CURBS**