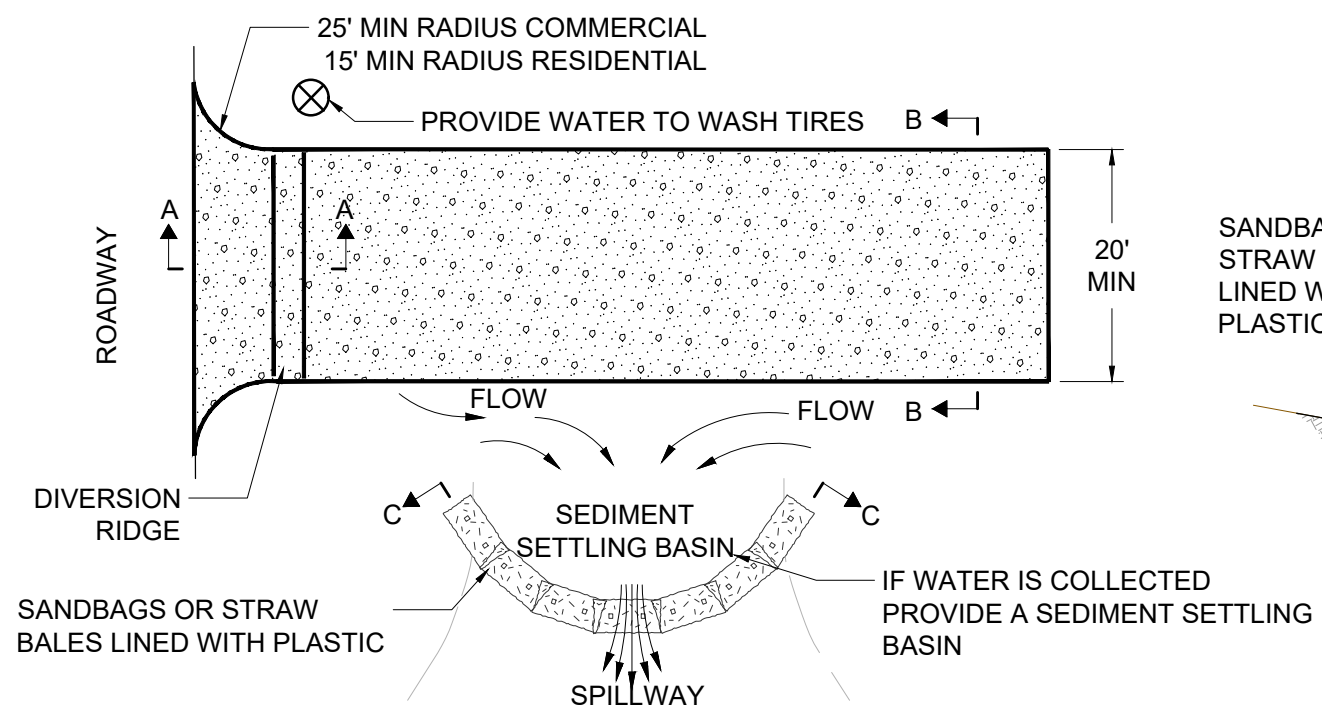
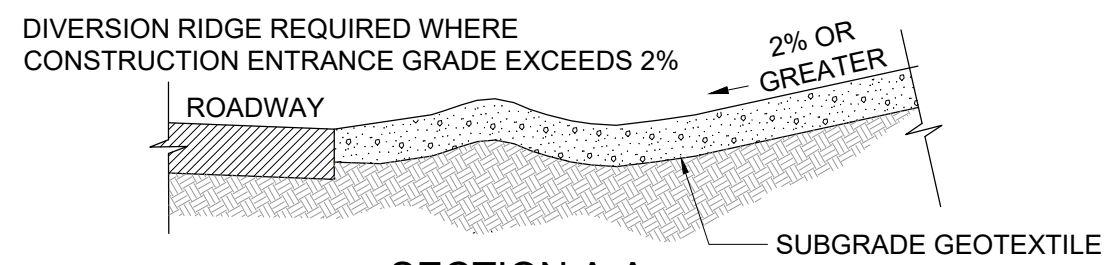


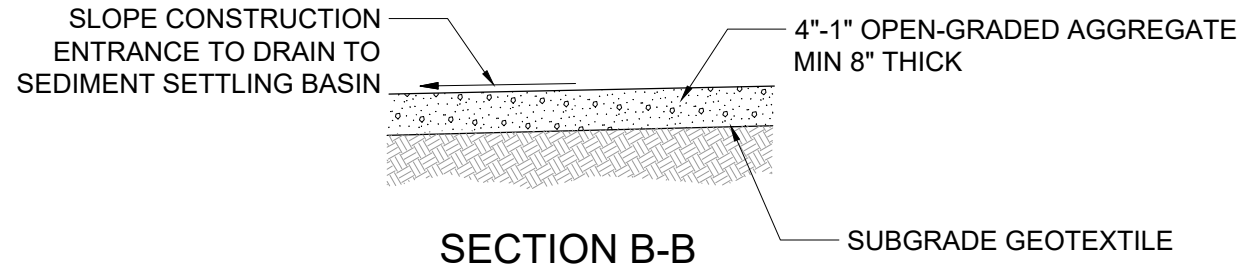
CONSTRUCTION ENTRANCE - TYPE 1



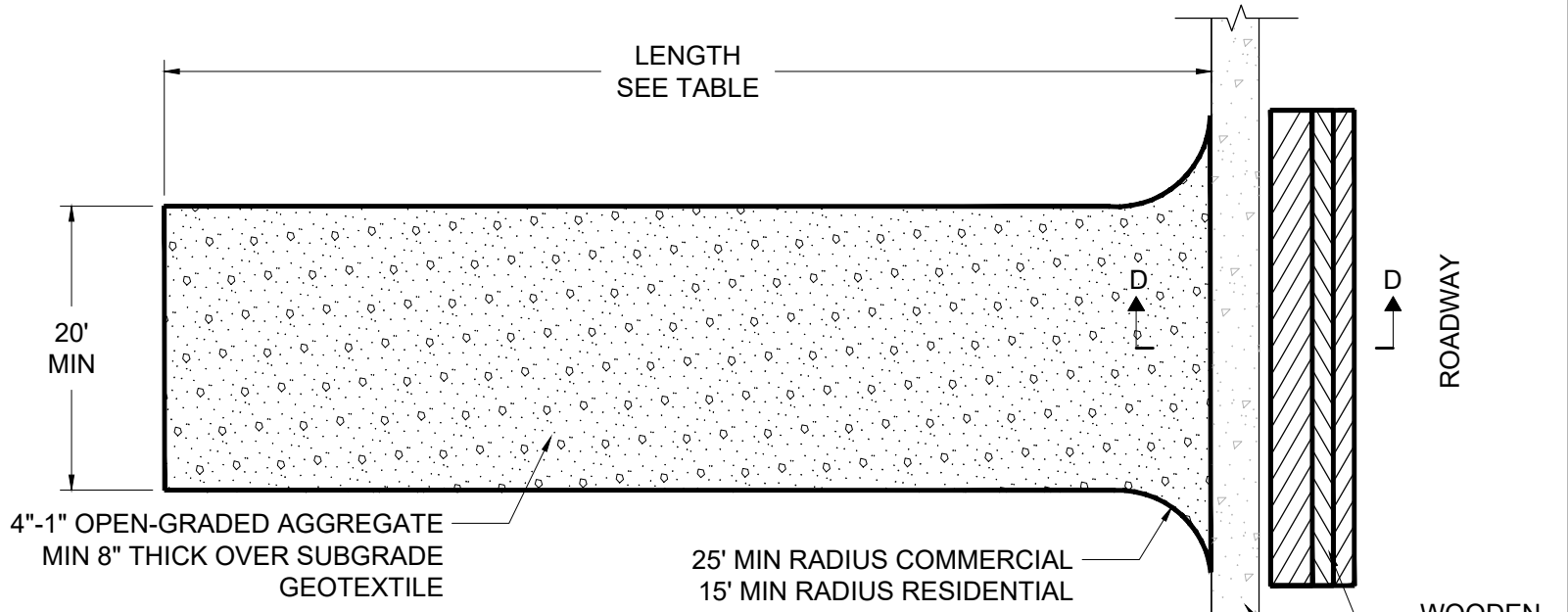
CONSTRUCTION ENTRANCE - TYPE 2



SECTION A-A

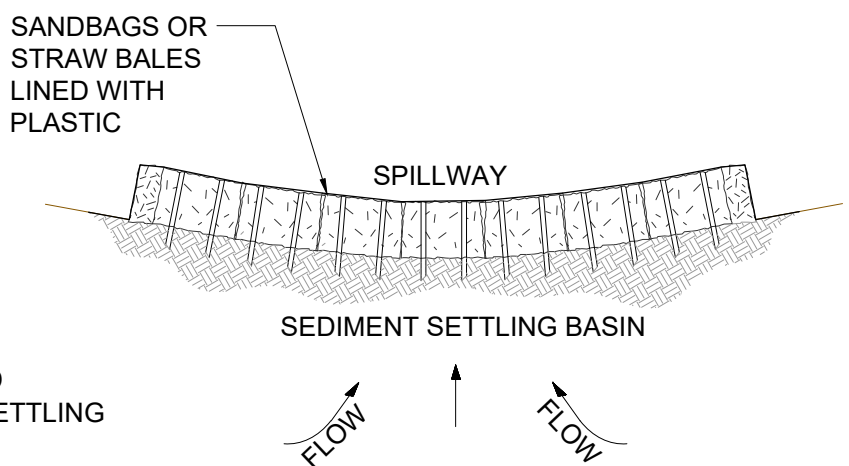


SECTION B-B

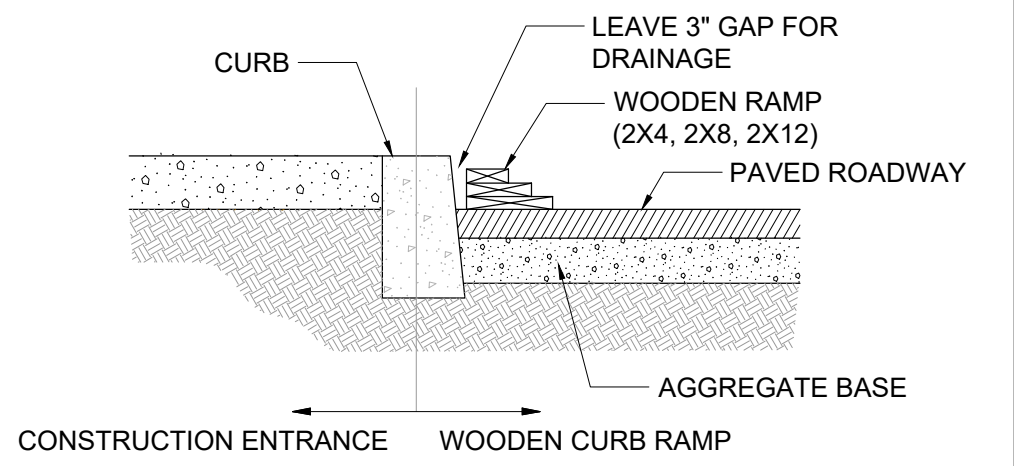


CONSTRUCTION ENTRANCE - TYPE 3

TYPE 1 OR 2 WITH EXISTING CURB



SECTION C-C



WOODEN CURB RAMP SECTION D-D

NOTES:

1. THE TYPE 1 ENTRANCE IS A SIMPLE ENTRANCE WITHOUT A DIVERSION RIDGE OR SETTLING BASIN.
2. THE WOODEN RAMP MAY BE USED ON EITHER TYPE 1 OR TYPE 2 ENTRANCES WHERE THERE IS CURB AND THE CURB IS NOT REMOVED FOR THE CONSTRUCTION ENTRANCE.

NOTES:
1. THIS DETAIL HAS BEEN MODIFIED BY THE CITY OF WINSTON. ALL MATERIAL AND WORKMANSHIP SHALL BE IN ACCORDANCE WITH THE CURRENT OREGON STANDARD SPECIFICATIONS.



WINSTON STANDARD DRAWING

CONSTRUCTION ENTRANCES