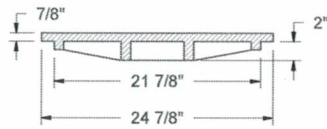
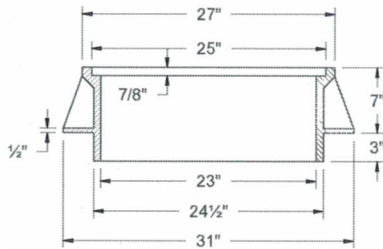


TWO HOLE 'S' COVER  
STANDARD  
NO VENT HOLES IN  
WATERTIGHT COVERS



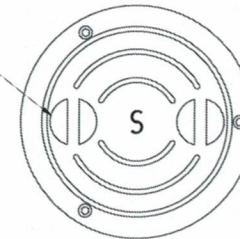
**STANDARD COVER**

(OLYMPIC FOUNDRY MH26S, OR APPROVED EQUAL)



**FRAME DETAIL**

(OLYMPIC FOUNDRY MH26A, OR APPROVED EQUAL)

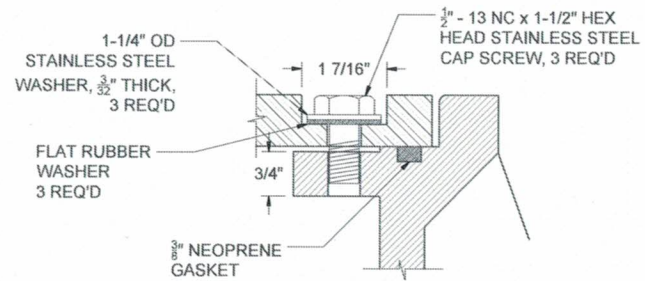


DEPRESSED  
HANDLE

BOLT FOR  
WATERPROOF AND  
BOLT-DOWN COVER  
SEE BELOW

**BOLT-DOWN COVER**

(OLYMPIC FOUNDRY MH26WT, OR APPROVED EQUAL)



**BOLT DOWN DETAIL**

**NOTES:**

1. TAMPER PROOF FRAME AND COVER REQUIRED OUTSIDE RIGHT OF WAY OR IN UNDEVELOPED AREAS.
2. MANHOLE FRAMES AND COVER SHALL HAVE H-20 RATING.



NOTES:  
1. THIS DETAIL HAS BEEN MODIFIED BY THE CITY OF WINSTON. ALL MATERIAL AND WORKMANSHIP SHALL BE IN ACCORDANCE WITH THE CURRENT OREGON STANDARD SPECIFICATIONS.

**WINSTON STANDARD DRAWING**

**MANHOLE COVERS AND FRAMES**