

**PLACEMENT ON SIDEWALK RAMP**

When distance "X" is less than 5', replaceable truncated dome detectable warning surface shall be placed perpendicular to the path of travel.

When distance "X" is greater than 5', replaceable truncated dome detectable warning surface shall be placed parallel to the bottom of curb ramp.

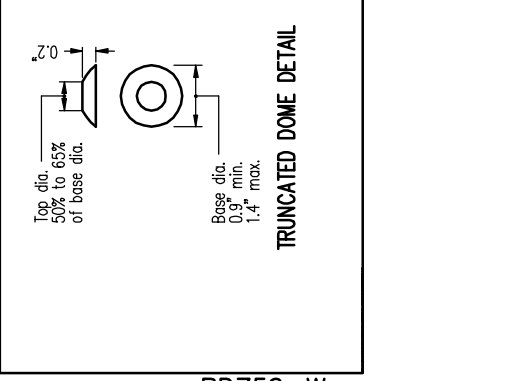
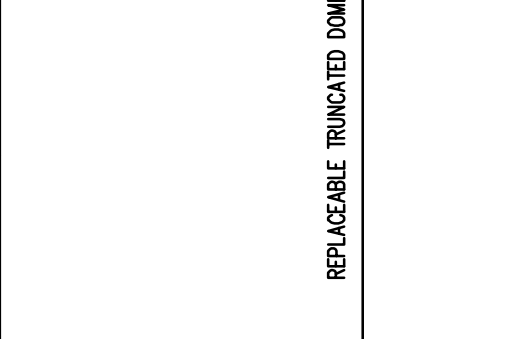
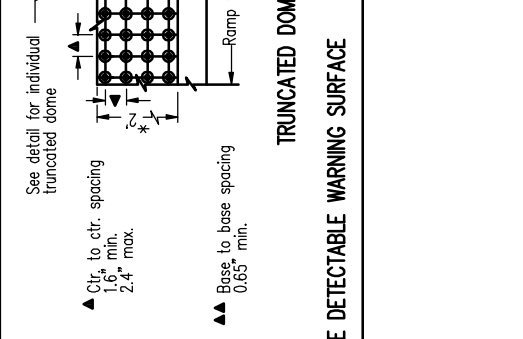
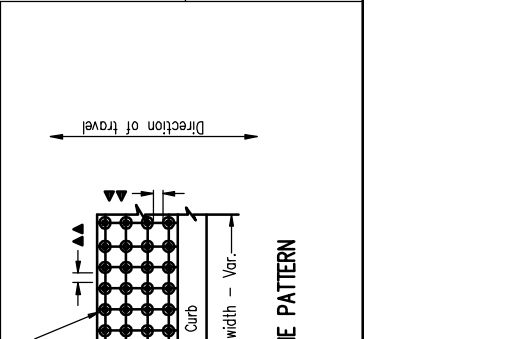
**PLACEMENT ON CROSSING ISLAND**

**PLACEMENT AT RAIL CROSSING**

**PLACEMENT ON PUBLIC TRANSPORTATION PLATFORM**

**TRUNCATED DOME DETAIL**

- GENERAL NOTES FOR ALL DETAILS:**
1. Replaceable Truncated dome detectable warning surface details & locations are based on United States Access Board Standards.
  2. See Std. Drgs. RD700-W & RD701-W for curbs. See Std. Drg. RD720-W for sidewalks. See Std. Drgs. TM503 & TM530 for crosswalk markings, widths, etc.
  3. Place replaceable truncated dome detectable warning surface in the lower 2' adjacent to traffic of throat of ramp only, unless otherwise shown. Arrange domes using square in-line pattern only. Color to be safety yellow if no color specified in construction note. All products on an installation to be identical.
  4. Replaceable Truncated dome detectable warning surface shall be used where the pedestrian access route leaves the street at the following locations:
    - a) Sidewalk ramps (See Std. Drgs. RD750, RD756, & RD757).
    - b) Crossing islands (Accessible Route Islands), (See Std. Drg. RD710).
    - c) Rail crossings (See detail).
  5. Where public transportation stations (rail, bus, etc.) use platform boarding, replaceable truncated dome detectable warning surface shall be placed along the full edge length of the station, when not protected by platform screens or guards.
  6. Replaceable truncated dome detectable warning surface shall not be used on the following locations:
    - a) Midblock sidewalk transitions (See Std. Drg. RD756).
    - b) Standard concrete driveways (See Std. Drgs. RD725, RD730, RD735, RD740, RD745, & RD750).
    - c) Parking lots.
  7. Only use details allowed by jurisdiction.
  8. In alterations, curb ramp slope(s) may be 10% for a max. rise of 6", or 12.5% for a max. rise of 3'.



NOTE: This detail has been modified by the City of Winston. All drawings shall be in accordance with the current Oregon Standard Specifications.

WINSTON STANDARD DRAWINGS

REPLACEABLE TRUNCATED DOME  
DETECTABLE WARNING SURFACE  
DETAILS & LOCATIONS

REPLACEABLE TRUNCATED DOME DETECTABLE WARNING SURFACE

TRUNCATED DOME PATTERN

TRUNCATED DOME DETAIL

RD759-W