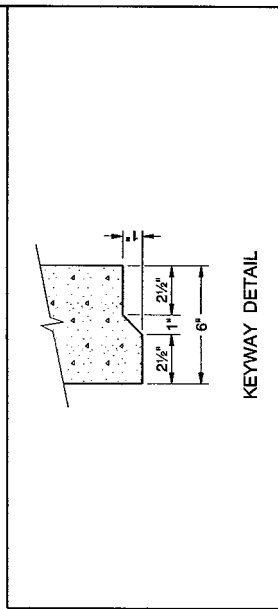


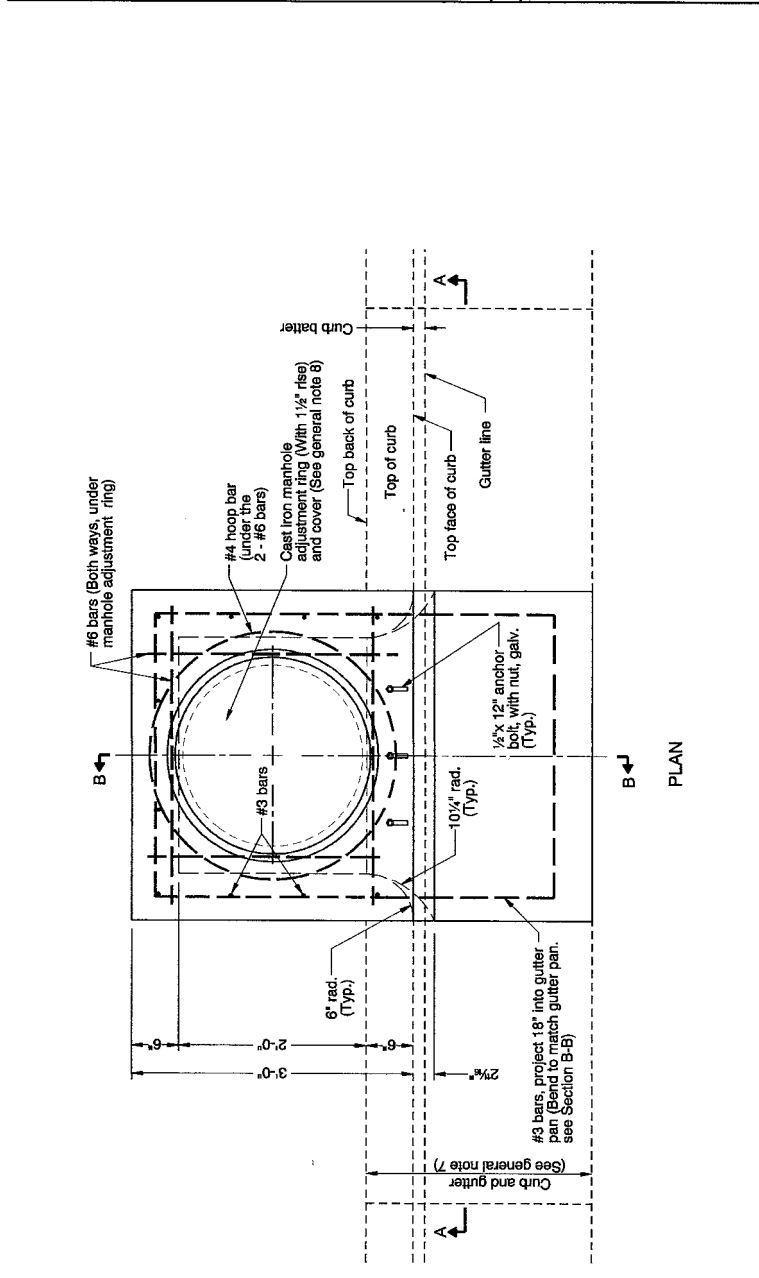
SECTION A - A

SECTION B - B

rd372.dgn 30-JUN-2009



KEYWAY DETAIL



PLAN

GENERAL NOTES FOR ALL DETAILS:

1. All concrete shall be commercial grade concrete.
2. Inlet top may be cast-in-place or precast.
3. All reinforcement shall be 2" clear of nearest face of conc., unless otherwise shown.
4. Vary anchor bolt length and reinforcing bar placement as required by curb exposure E (see note 7 below).
5. See Std. Drg. RD371 for inlet base details.
6. See Std. Drg. RD371 for inlet pay limit.
7. See Std. Drgs. RD700 & RD701 for curb and gutter details.
8. See Std. Drg. RD356 for cast iron manhole adjustment ring and cover.

BASELINE REPORT DATE	30-JUN-2009
NOTE:	All material and workmanship shall be in accordance with the current Oregon Standard Specifications
<b>OREGON STANDARD DRAWINGS</b>	
<b>CONCRETE INLET TOP, OPTION 1</b>	
<b>TYPE CG-3</b>	
DATE	2008
REVISION	DESCRIPTION

The selection and use of this Standard Drawing, while designed in accordance with generally accepted engineering principles and practices, is the sole responsibility of the user and should not be used without consulting a Registered Professional Engineer.

Effective Date: June 1, 2010 - November 30, 2010

RD372

RD372