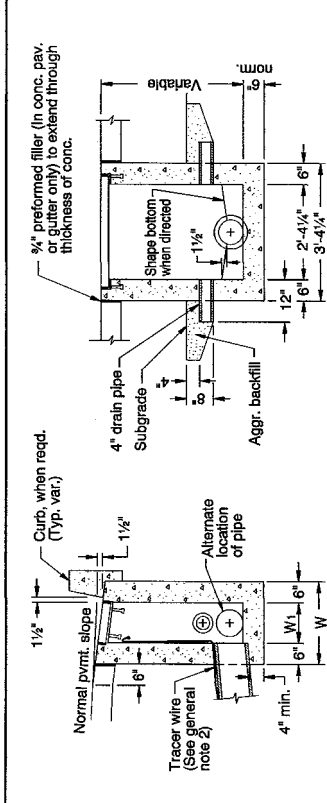


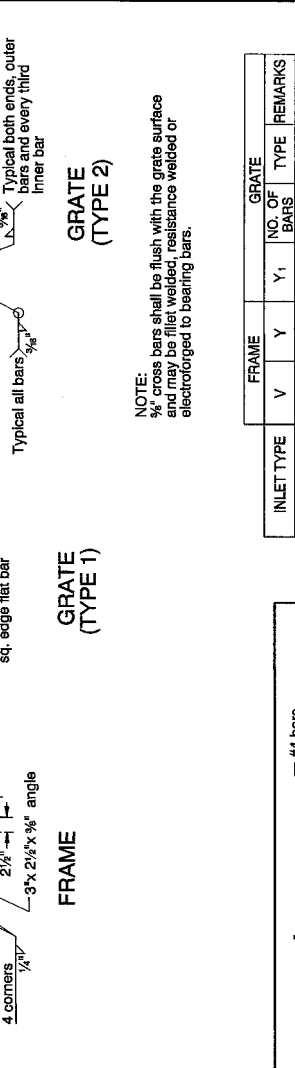
GRATE (TYPE 2)

NOTE: 3/8\"/>



GRATE (TYPE 1)

NOTE: All material and dimensions shall be in accordance with the current Oregon Standard Specifications.



FRAME

INLET TYPE	FRAME		GRATE			REMARKS
	V	Y	Y1	NO. OF BARS	TYPE	
G-1	1'-10 1/2\"/>					
G-2	2'-4 1/2\"/>					
G-2M, G-2MA	2'-4 1/2\"/>					

GENERAL NOTES FOR ALL DETAILS:

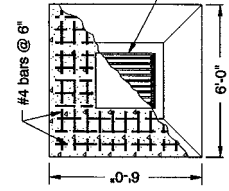
1. See Std. Drg. RD366 for gutter transition.
2. See Std. Drg. RD386 for tracer wire details, or approved alternate.
3. Provide sump only where shown on plans, and allowed by jurisdiction. For sump details, see Std. Drg. RD384.



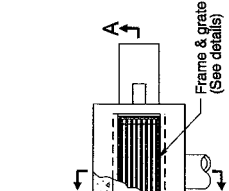
FRAME

SECTION C-C

NOTE: All reinforcement to be placed 2\"/>



PLAN TYPE G-2MA



PLAN TYPES G-1, G-2, G-2M

INLET WITH SUMP (See general note 3)

INLET TYPE	W	W1
G-1	2'-8 3/4\"/>	
G-2, G-2M	3'-3 3/4\"/>	

INLET WITH SUMP (See general note 3)



SECTION A-A INLET WITHOUT SUMP



SECTION A-A INLET WITH SUMP

BASELINE REPORT DATE: _____

NOTE: All material and dimensions shall be in accordance with the current Oregon Standard Specifications.

OREGON STANDARD DRAWINGS
CONCRETE INLETS
TYPE G-1, G-2, G-2M & G-2MA

DATE	REVISION DESCRIPTION
04-2008	REVISED & ADDED NOTES
12-2009	REVISED DETAILS AND NOTES

2008

Effective Date: June 1, 2010 - November 30, 2010

RD364