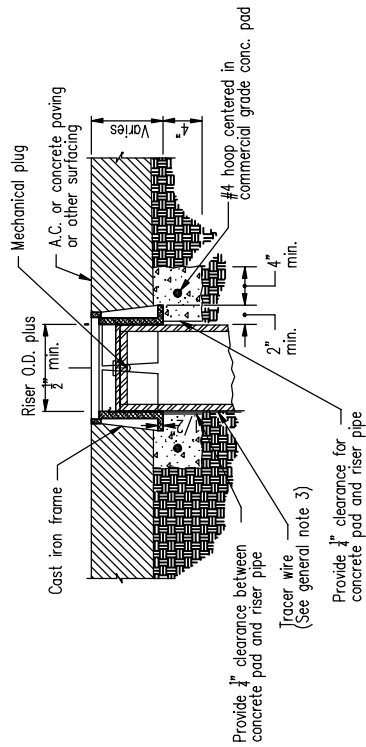
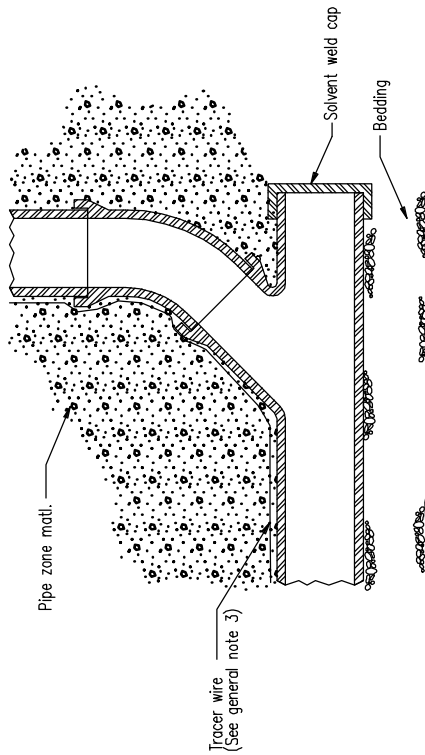




CAST IRON COVER



CAST IRON FRAME



GENERAL NOTES FOR ALL DETAILS:

1. Casting shall meet H20 load requirement.
2. Provide riser size and material to match carrier pipe.
3. See Std. Drg. RD.336 for tracer wire details.
4. All concrete shall be commercial grade concrete.

NOTE: This detail has been modified by the City of Winston. All material and workmanship shall be in accordance with the current Oregon Standard Specifications.

WINSTON STANDARD DRAWINGS

SANITARY CLEANOUT