

Manhole cover and frame as specified and shown on manhole covers and frames Std. Drg. RD356

Frame and adjustment rings shall be sealed with non-shrink grout, preformed plastic or rubber ring to form a watertight seal

Precast adjustment rings

Provide manhole steps unless otherwise specified. Concentric cone may be used if steps or ladders are not required. (See general notes 7 and 10)

All joints shall be sealed with preformed plastic or rubber ring to form a watertight seal

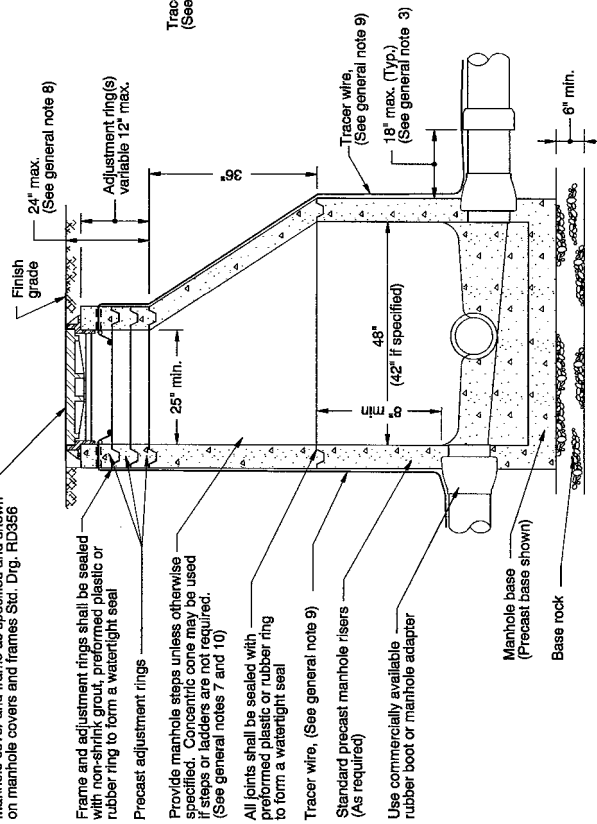
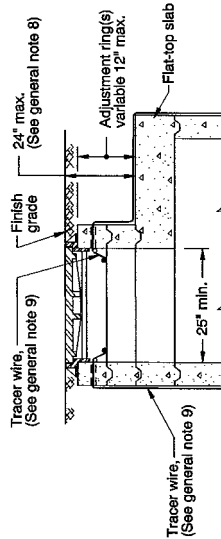
Tracer wire, (See general note 9)

Standard precast manhole risers (As required)

Use commercially available rubber boot or manhole adapter

Manhole base (Precast base shown)

Base rock



**GENERAL NOTES FOR ALL DETAILS:**

1. All precast sections shall conform to requirements of ASTM C478.
2. Standard precast manhole section diameter shall be 48". Use 42" if specified by the Engineer. Maximum pipe diameter 24".
3. All connecting pipes shall have a flexible, gasketed, and unrestrained joint within 18" of manhole wall.
4. See Std. Drg. RD344 for manhole base section.
5. This detail limited to interior drop of 24". See Std. Drgs. RD350 or RD352 for drop manhole details for drops in excess of 24".
6. Use flat top for shallow manhole where directed. (See Std. Drg. RD342).
7. See Std. Drg. RD336 for manhole steps details.
8. Adjust 24" max.
9. See Std. Drg. RD336 for tracer wire details.
10. Ladder with notched safety rail and removable extension is reqd. for manholes with depths between 24'-0" and 50'-0".

CALC. BOOK NO.

BASELINE REPORT DATE

NOTE: All material and workmanship shall be in accordance with the current Oregon Standard Specifications

<b>OREGON STANDARD DRAWINGS</b>	
<b>STANDARD SANITARY SEWER MANHOLE</b>	
DATE	2008
REVISION	DESCRIPTION

The selection and use of this Standard Drawing, while designed in accordance with generally accepted engineering principles and practices, is the sole responsibility of the user and should not be used without consulting a Registered Professional Engineer.

**Effective Date: June 1, 2010 - November 30, 2010**

**RD338**